



## **PUBLIC KICK-OFF MEETING**

**SR-9/I-95 at SR-804/Boynton Beach Boulevard Interchange and  
SR-9/I-95 at Gateway Boulevard Interchange  
Project Development and Environment Study  
Palm Beach County, Florida**

**Financial Project ID No(s): 435804-1-22-01 and 231932-1-22-01  
ETDM No(s): 14180 and 14181**

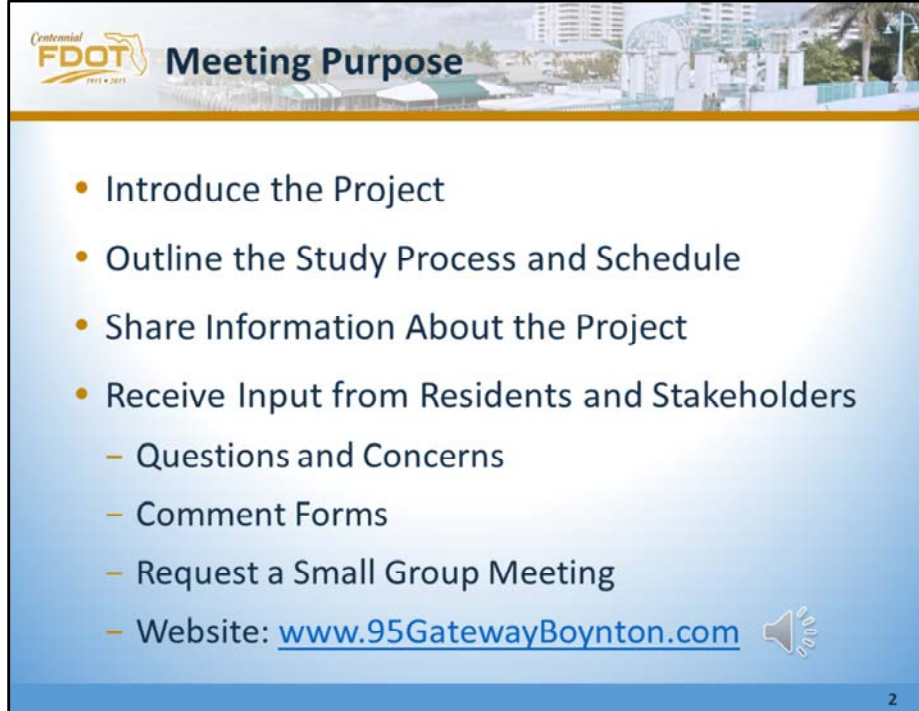
**September 17, 2015**




1

Welcome to the Public Kick-off Meeting for the SR-9/I-95 Interchanges at Boynton Beach Boulevard and Gateway Boulevard. Thank you for your interest in this important study.

The Florida Department of Transportation, or FDOT, District Four, is conducting this public meeting concerning planned future transportation improvements at these interchanges. The purpose of this meeting is to provide an opportunity for the public to learn about the project, become familiar with the study process, and provide initial feedback. FDOT representatives are available to discuss the study with you and answer your questions. The FDOT also encourages you to provide your comments about the project.



**Centennial FDOT 1915 • 2015 Meeting Purpose**

- Introduce the Project
- Outline the Study Process and Schedule
- Share Information About the Project
- Receive Input from Residents and Stakeholders
  - Questions and Concerns
  - Comment Forms
  - Request a Small Group Meeting
  - Website: [www.95GatewayBoynton.com](http://www.95GatewayBoynton.com) 

2

The purpose of this meeting is to outline the study process and schedule, to share information about the project, and gather your input. We would like you to discuss your questions and concerns with us. Please take the time to fill out and submit a comment form. We will also be available to meet with your homeowner’s associations or other interested groups on an individual basis. You can find more information about the project on the study website at [www.95GatewayBoynton.com](http://www.95GatewayBoynton.com).



## Project Development and Environment (PD&E) Study

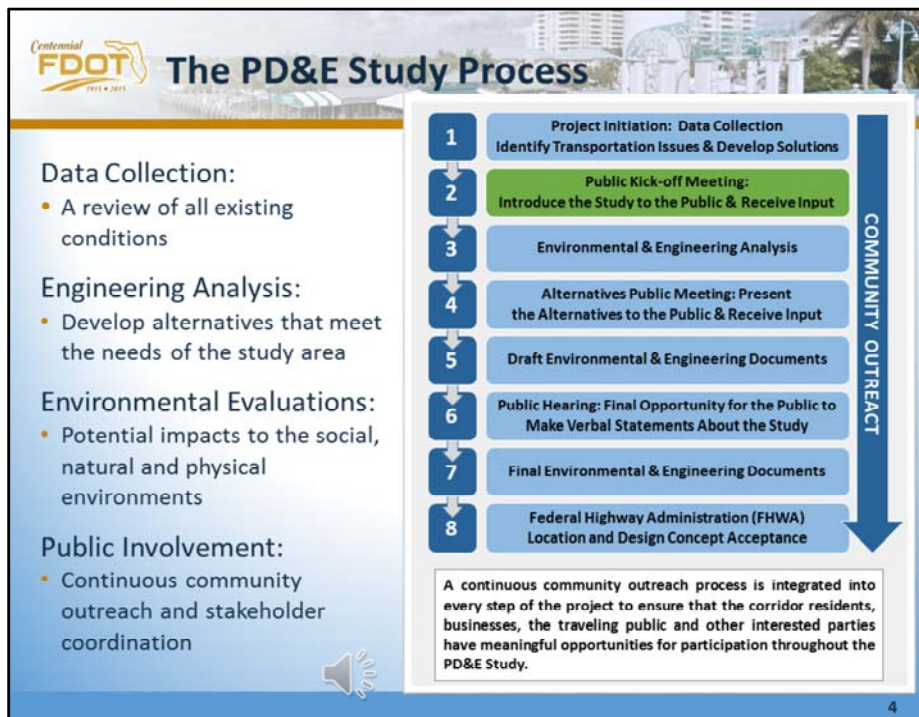
### PD&E Study Objectives:

To perform the necessary social, environmental and engineering studies regarding a proposed transportation improvement to support decisions concerning “if” and “where” it should be built, and what the basic design concepts will be.



3

The objectives of this Project Development and Environment, or PD&E Study, are to perform the necessary social, environmental and engineering studies regarding transportation improvements to support decisions concerning “if” and “where” it should be built, and what the basic design concepts will be. A PD&E Study follows the National Environmental Policy Act or NEPA, and related state and federal regulations.





The PD&E Study process begins with data collection followed by engineering analysis and environmental evaluations.

Public involvement is ongoing throughout the study. We are currently at the Public Kick-off Meeting stage introducing the project to the public and asking for local input.

Centennial  
**FDOT**  
1995 • 2015

## PD&E Study Components

- Public Involvement
- Engineering
- Environmental



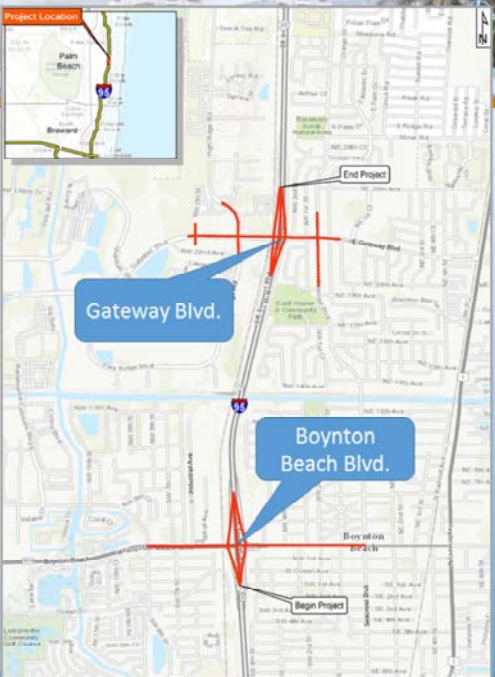
5

A PD&E Study consists of public involvement, engineering, and environmental components.

**Centennial FDOT 1915 • 2015 Study Area**

**Location:**

- Eastern Palm Beach County
- City of Boynton Beach
- Between Boynton Beach Boulevard and at SR-9/I-95 and Gateway Boulevard at SR-9/I-95
- Gateway Boulevard: the study area extends from west of NW 7<sup>th</sup> Street to NE 1<sup>st</sup> Way
- Boynton Beach Boulevard: the study area extends from SW 8<sup>th</sup> Street to east of Seacrest Boulevard



6

The study area is located in Eastern Palm Beach County within the City of Boynton Beach. At Gateway Boulevard, the study area extends from west of NW 7<sup>th</sup> Street to NE 1<sup>st</sup> Way. At Boynton Beach Boulevard, the study area extends from SW 8<sup>th</sup> Street to east of Seacrest Boulevard.

- Enhance overall traffic operations at the Boynton Beach and Gateway Boulevard interchanges
- Improve capacity and meet future travel demand resulting from:
  - Population growth
  - Employment growth
- Consistent with local transportation plans



The purpose of this project is to evaluate transportation improvement alternatives that would enhance traffic operations at the existing interchanges and improve roadway capacity to meet future travel demand. This project is consistent with local transportation plans.

### Data Collection and Analysis

Some of the data gathered includes:

- Traffic counts
- Crash records
- Existing roadway conditions
- Identification of wetlands
- Threatened/Endangered species habitat
- Existing land use and property information
- Census Data
- Planned developments
- Existing drainage systems and drainage patterns
- Contamination sites
- Archeological/Historical sites



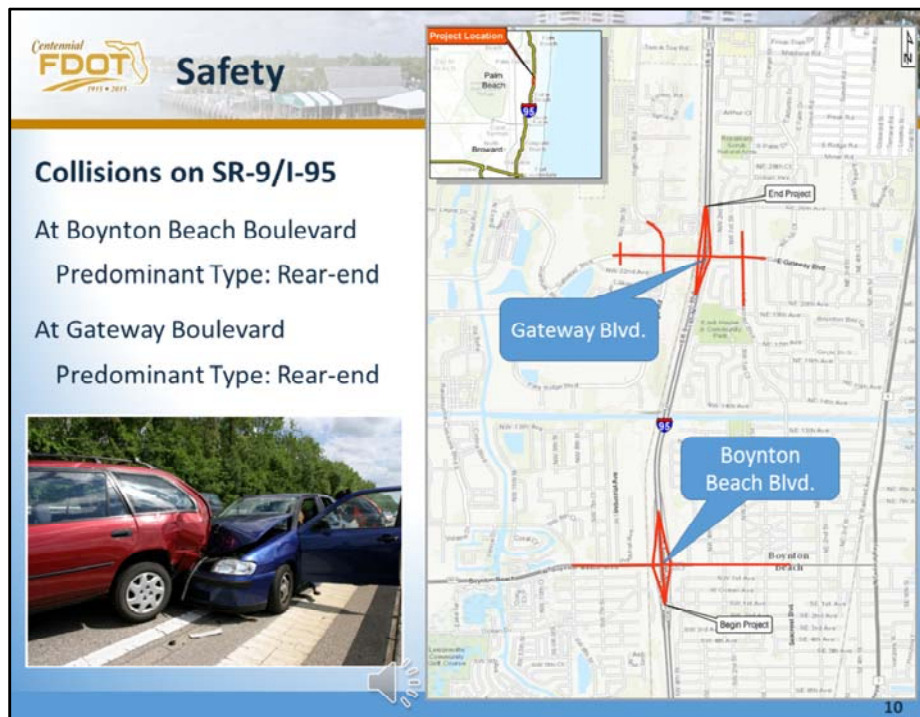
The engineering and environmental components of a PD&E Study include data collection and analysis for development and evaluation of various alternatives that meet the purpose and need for the project. Here is a list of the types of data typically collected during a PD&E Study.



- Roadway doesn't handle existing traffic demand
- Average daily traffic (ADT) anticipated to increase
- Level of Service F with degraded traffic operations unless improvements are made



A planning study (Phase 1) was completed in 2014 that showed the roadways within the project study area don't handle existing traffic volumes. Traffic is anticipated to increase in the future with continuing development and economic opportunities. If no improvements are made, drivers will experience more traffic congestion and delays.



Evaluating historical crash data allows engineers to predict safety impacts of proposed improvements.

Crash reports are reviewed along with other traffic data to determine which locations have the highest number of incidents and what the major causes were. This helps the engineers identify issues that may be causing the crashes and provides information for the development of alternatives that will make the roadway safer.

High crash locations along Boynton Beach Boulevard include SR-9/I-95 at the northbound on and off-ramps and the southbound off-ramp.

No high crash locations are reported on Gateway Boulevard in the project area; however, SR-9/I-95 near the vicinity of the Gateway Boulevard Interchange is identified as a high crash segment.

Centennial  
**FDOT**  
1915 • 2015

## Emergency Evacuation

**Evacuation:**

- Part of the emergency evacuation route network
- Major east-west and north-south corridors
- Connects with other major arterials and highways

**PALM BEACH**  
EVACUATION ROUTES & ZONES

11

Boynton Beach and Gateway Boulevards, along with SR-9/I-95 serve as part of the emergency evacuation route network and are critical in facilitating traffic flows during emergency evacuation periods.

These roadways are major east-west and north-south corridors that connect with other major arterials and highways.

Potential interchange improvements will enhance connectivity and accessibility and increase the operational capacity of traffic that can be evacuated during an emergency event.



## Alternatives



### Alternatives Analysis

- Meet future travel demand
- Avoid or minimize impacts to the community and the environment
- Developed with input from the the public, local governments and environmental agencies
- Criteria for comparison of alternatives:
  - Community and environmental impacts
  - Costs for design and construction, engineering inspection, right-of-way acquisition, and environmental mitigation



12

Alternatives will be designed to meet future travel demand and avoid or minimize impacts to the community and the natural and physical environments.

The alternatives will be developed with input obtained throughout the study process from the general public, local governments and environmental agencies.

Comparison of alternatives may include criteria such as community and environmental impacts, and costs for design and construction, engineering inspection, right-of-way acquisition, and environmental mitigation.

Centennial  
**FDOT**  
1915 • 2015

## Environmental Analysis

- Social and Cultural Environment
- Natural Environment
- Physical Environment
- Environmental Reports



13

The PD&E Study will collect and evaluate data and information relative to the social and cultural, natural, and physical environments.

Centennial  
**FDOT**  
1915 • 2015

## Social and Cultural Environment

- Socio-Economic Effects
- Socio-Cultural Effects
- Archaeological and Historic Sites
- Visual Impacts and Aesthetics
- Parks and Recreational Resources



14

The socio-cultural environment is a population of residents within a specific area; described with special attention paid to the influence of race, religion, family, education, income and social systems.

Socio-cultural effects describe the awareness of the circumstances of individuals and how their behaviors are affected specifically by their surroundings, social and cultural factors.

Centennial  
**FDOT**  
1915 • 2015

## Natural Environment

- Wetlands
- Wildlife
- Habitat
- Endangered Species
- Water Resources



15

The natural environment includes natural resources that affect human survival and economic activity.

Environmental evaluations will be conducted to study the potential impacts the different alternatives may have on wetlands, wildlife and habitat, and endangered species.

- Pedestrian and Bicycle Facilities
- Contamination Sites
- Visual Impacts
- Air Quality
- Noise
- Construction



The physical environment is the part of the human environment that includes physical factors such as pedestrian and bicycle facilities, contamination sites, air and noise, and construction.





- Evaluate future traffic levels and operations
- Review engineering data collected
- Evaluate environmental impacts
- Develop viable alternatives



The project team will continue working on the the evaluations of traffic levels and operations, reviewing engineering and environmental data and potential impacts, and will move forward with developing the viable alternatives to be presented at the next public meeting.

### Continuous Public Involvement

- City of Boynton Beach
- Palm Beach County
- Local agencies
- Small group stakeholders
- Available to give presentations upon request



FDOT representatives will meet with the City of Boynton Beach, Palm Beach County, local permitting agencies and other stakeholders. FDOT representatives are also available to give presentations or meet with homeowner associations and other interested groups upon request.

**Centennial FDOT 1915 • 2015** **Public Involvement**

- Elected and Appointed Officials/Agencies Kick-off Meeting
- Public Kick-off Meeting
- Alternatives Public Meeting
- Public Hearing
- Project Website: [www.95GatewayBoynton.com](http://www.95GatewayBoynton.com)
- Local Outreach

**Florida Department of TRANSPORTATION** SR-95 at SR-254 Boynton Beach Boulevard Interchange and SR-95 at Gateway Boulevard Interchange  
 Project Development & Environment Study  
 1100 Boynton Beach Blvd., Suite 1100, Boynton Beach, FL 33435  
 561-960-3333

**Newsletter No. 1 Page 1 August 2015**

**Introduction**  
 The Florida Department of Transportation (FDOT), District Four is conducting a Project Development and Environment (PDE) Study for SR-95 at the SR-254/Boynton Beach Boulevard Interchange and SR-95 at the Gateway Boulevard Interchange. The study area is located in eastern Palm Beach County within the City of Boynton Beach. At Boynton Beach Boulevard, the study area extends from SR 95 West to east of Boynton Boulevard. At Gateway Boulevard, the study area extends from east of SR 95 West to SR 95.

**When is a PDE Study?**  
 A Project Development and Environment (PDE) Study is a process conducted by the Florida Department of Transportation (FDOT) to determine the environmental, social and economic impacts that are associated with proposed transportation improvements. The process is conducted in accordance with the National Environmental Policy Act (NEPA), and is a coordinated effort by professional engineers, planners, environmental scientists and others who analyze the project related information to develop the best alternative for a community's transportation needs.

**Why ARE YOU invited to a Public Kick-off Meeting?**  
 A Public Kick-off Meeting has been scheduled to provide an opportunity for you to learn about the project, become familiar with the study process, and provide initial feedback. This meeting will be held in an informal, open-house format with a short listening presentation that will provide an overview of the existing conditions, FDOT and project team members will be available to discuss the project and answer questions.

**Date:** Thursday, September 17  
**Time:** From 5:30 p.m. to 7:30 p.m.  
**Location:** The City of Boynton Beach  
 400 West Boynton Beach Boulevard  
 Boynton Beach, Florida 33435

Visit our website at: [www.95GatewayBoynton.com](http://www.95GatewayBoynton.com)

Today we are conducting both an Elected and Appointed Officials and Agencies Kick-off Meeting, and a Public Kick-off Meeting. The same information is being presented at both meetings.

Future meetings include an Alternatives Public Meeting and a Public Hearing.

More information about the project is available on the project website at [www.95GatewayBoynton.com](http://www.95GatewayBoynton.com). All of the material from this meeting, including this presentation, have been uploaded on the website.

You do not need to wait for a public meeting to be involved. You can contact study team members, be added to the mailing list, or request small group meetings.

**Centennial FDOT 1915 • 2015** **How Can You Get Involved?**

**Comment Forms**

- Place in the comment box tonight
- Mail to the address on the form

**Website:**

- [www.95GatewayBoynton.com](http://www.95GatewayBoynton.com)

**Request a Small Group Meeting**

- Neighborhood association
- Special interest group

**COMMENT FORM**  
**PO&E Study Public Kick-off Meeting**  
 SR 95-95 at SR 804/Boynton Beach Boulevard Interchange and  
 SR 95-95 at Gateway Boulevard Interchange, Palm Beach County, Florida  
 Project Manager's Office: 434844 1 22 01 and 233348 1 22 01  
 889 West Transportation Services Building (FDOT's Building 3488) and 34381

111 at Boynton Beach located at 400 West Boynton Beach Boulevard, Boynton Beach, Florida 33405  
 Thursday, September 17 From 9:00 a.m. to 7:00 p.m.

Please provide your comments online. If more space is needed, please use an additional sheet of paper. You may also give comments to the "Comments Box" provided at the meeting, or send to Thuc H. Le, P.E., FDOT Project Manager, at the address on the bottom of the page. Please forward all comments by September 28, 2015.

Name \_\_\_\_\_  
 Address \_\_\_\_\_  
 City, State, Zip \_\_\_\_\_  
 Phone Number \_\_\_\_\_  
 Email Address \_\_\_\_\_

**SEND TO:**  
 Mr. Thuc H. Le, P.E.  
 FDOT Project Manager  
 Florida Department of Transportation  
 3400 Commercial Boulevard  
 Fort Lauderdale, Florida 33309

Please visit our website at [www.95GatewayBoynton.com](http://www.95GatewayBoynton.com)

21

Your knowledge and opinions matter. Tell us what you know. Please take the time to fill out a comment form. You may either drop it in the comments box available at this meeting, or mail it to the FDOT project manager. His contact information is included at the bottom of the comment form. You may also send Mr. Le an email at [thuc.le@dot.state.fl.us](mailto:thuc.le@dot.state.fl.us). All comments received will become a part of the public record for this study and they will be included in the alternatives decision making process.

You may also visit the study website at [www.95GatewayBoynton.com](http://www.95GatewayBoynton.com) for more information. Go to the "Sign Up for Updates" page to leave a comment or ask to be added to the mailing list. Persons on the mailing list will receive notices for future public meetings.

Or, you may request a small group meeting for your neighborhood association or special interests group.



**Contact Information**

**FDOT Project Manager**  
Thuc H. Le, P.E.

Florida Department of Transportation, District Four  
3400 West Commercial Boulevard  
Fort Lauderdale, Florida 33309  
Phone: 954-777-4552  
Toll free: 1-866-336-8435 ext. 4552  
Email: [thuc.le@dot.state.fl.us](mailto:thuc.le@dot.state.fl.us)



22

Here is the contact information for the FDOT Project Manager, Thuc Le. Mr. Le’s contact information is also available on the study website.



Thank you again for your interest in this study and for taking the time to attend this Kick-off Meeting.

This presentation will begin again in approximately one minute.